



At the Heart of Patient Care

Breast Health • Clinical Aromatherapy
CT-Scan • MRI • Radiation Oncology • X-Ray

A focus on making the lives of everyone we touch a little better

At Beekley Medical®, our goal is to help positively impact patients' lives and improve clinical outcomes.

To accomplish this goal, we have a high commitment to investing in the research and development of simple, low cost, disposable products that help medical imaging, surgical, and radiation oncology professionals improve communication, productivity, and patient care.

We partner with our customers, clinicians, and inventors to produce professional products that replace makeshift or improve upon current methods. Our industries are carefully monitored to ensure our products meet tomorrow's needs today.

A commitment to quality

At Beekley Medical, we are committed to providing our customers with safe, effective, high-quality medical products. Beekley Medical's commitment to quality begins with our associates. All Beekley Medical associates are responsible for quality as reflected in the Beekley Quality Policy. Each and every associate plays an integral part in the success of Beekley Medical's quality management system. This focus has resulted in earning certification to the internationally recognized standard for medical device quality management systems, ISO 13485. The certification shows that Beekley Medical has demonstrated the ability to provide medical devices that consistently meet customer and applicable regulatory requirements.

Beekley Medical® Products for...

Breast Health

Mammography

Bella Blankets® Protective Coverlets	4
--	---

Mammography Skin Markers

TomoSPOT® Skin Markers for Digital Breast Tomosynthesis.....	5
Mole Markers	6
Nipple Markers.....	7-8
Palpable Mass Markers.....	9
Point of Pain/Non-Palpable Area of Concern Markers.....	9
Scar Markers.....	10

Surgical Procedures

Breast Biopsy

ColdSPOT® Cold Therapy Packs.....	11
CoreTainer® Stereotactic Core Biopsy Image and Transport System.....	12

Lumpectomy

AccuGrid® Specimen Localizing Grid System	13
Cradles® Needle Localization Wire Protectors	14
Pinnacle® Needle-Loc Needle Protectors	15

Clinical Aromatherapy

Elequil Aromatabs® Aromatherapy	16
---------------------------------------	----

CT-Scan

GuideLines® CT Biopsy Grids	17
Localization Markers.....	18

CT-Scan / MRI

Multi-Modality Fiducial.....	19
------------------------------	----

MRI

MR-SPOT® Skin Markers	20-21
-----------------------------	-------

Radiation Oncology

CT Simulation Skin Markers	22-23
Conventional Simulation Skin Markers	24
PointGuards® Temporary Mark Covers	25
TenderTouch™ Thermoplastic Tape	26

X-Ray

Body Orientation Markers.....	27
Chest, Trauma, and General Imaging.....	27

Skin Marker Accessories

Linear Product Scissors	28
Wall Mounts for SPOT® Dispensers	28

Check with your local distributor for availability of products in your country.

Bella Blankets® Protective Coverlets

Bella Blankets® Protective Coverlets for Mammography

Capture more breast tissue with Bella Blankets® protective coverlets.¹ Thin by design, Bella Blankets® protective coverlets allows technologists to position patients as close to the chest wall as possible. Textured material helps with “hard to position” breasts, prevents breasts from sticking to receptor plate to avoid skin tears, helps shield cuts or infections in the inframammary fold, and acts as a sanitary barrier.

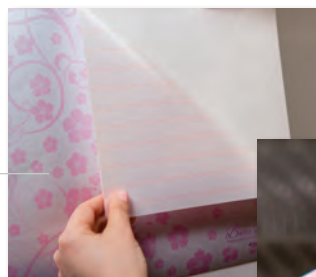
Vertical Channel Technology™ (only from Beekley Medical®) allows air to push out and release upon application, reducing air bubbles. Easy-lift Pik-UP™ tab allows for easy removal of Bella Blankets® protective coverlets from the receptor plate without leaving residue.



Bella Blankets®

REF 310 QTY 50/box

- 22.9cm x 27.9cm
- intended for use on 18cm x 24cm receptor plate



Vertical Channel Technology™



Easy-lift Pik-UP™ tab



Bella Blankets®

REF 311 QTY 50/box

- 29.2cm x 33.0cm
- intended for use on 24cm x 30cm receptor plate

- Using Bella Blankets® protective coverlets aligns with proper positioning initiatives to support MQSA's EQUIP guidelines
- Bella Blankets® protective coverlets FDA 510(k) clearance applies to all mammography equipment
- Using Bella Blankets® protective coverlets during a mammogram is essentially the same average glandular dose as no coverlet on the receptor plate²



¹ Wagner, S. and A Merkulov, MD. 2013. "Comparison Study: Impact of Thin Protective Coverlets on Positioning and Tissue Acquisition in Breast Imaging."

² Gerald J. Randall, M.S. (DABR) (Certified Licensed Medical Physicist), "Mammo Protective Coverlets Testing", March 3, 2017.

Distinctly identify and permanently document nipples, moles, scars, palpable masses, and areas of pain or concern on mammographic images with Beekley® SPOT® skin markers for mammography. The result is clear communication between patient, technologist, and radiologist regarding areas of interest and more precise interpretation of the mammogram.

TomoSPOT® Skin Markers for Digital Breast Tomosynthesis

For optimal 3D imaging, TomoSPOT skin markers are created with our lowest density formula available. Made with a pinch-free material to help with easy removal for patient comfort; TomoSPOT skin markers subtly highlight areas of interest or concern with the clearest visualization of tissue detail and minimal dense object artifact in both 3D and standard 2D images in DBT.



TomoSPOT® for Marking Nipples

REF 781 QTY 92/box

- 2.3mm non-metallic pellet



THE RAISED CIRCLE ONLY
FROM BEEKLEY MEDICAL

TomoSPOT® for Marking Moles

REF 782 QTY 54/box

- 1.0mm low-density see-through ring



TomoSPOT® for Marking Scars

REF 783
QTY 273cm cut to measure roll/box

- 1.0mm diameter low-density see-through line



THE RAISED TRIANGLE ONLY
FROM BEEKLEY MEDICAL

TomoSPOT® for Marking Palpable Masses

REF 784 QTY 116/box

- 1.0mm low-density see-through triangle



THE RAISED SQUARE ONLY
FROM BEEKLEY MEDICAL

TomoSPOT® for Marking Non-Palpable Areas of Concern

REF 785 QTY 58/box

- 1.0mm low-density see-through square

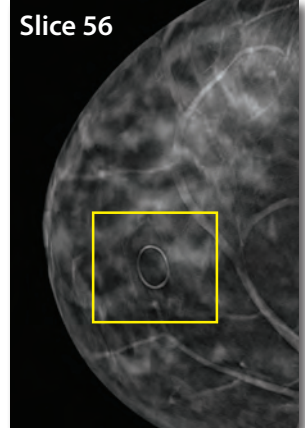


Figure 1 – Slice 56 shows mole marker at its clearest resolution.

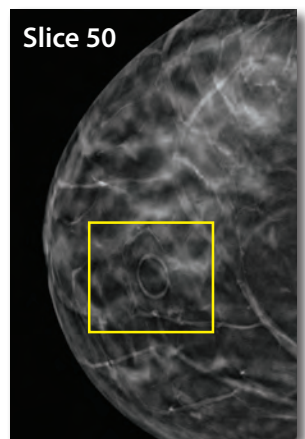


Figure 2 – Slice 50 shows mole marker beginning to fade when scrolling through the tomosynthesis dataset slices.

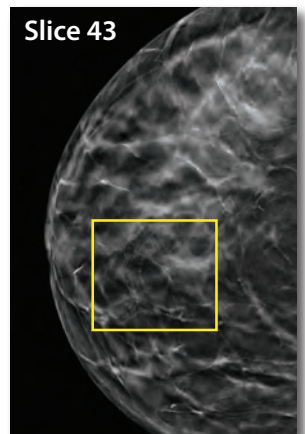


Figure 3 – Slice 43 is the point at which the mole marker is no longer visible.

Mammography Skin Markers

Mole Markers

Provide certainty that densities on mammographic images highlighted by the O-shaped marker are moles and not areas of concern.



THE RAISED CIRCLE ONLY
FROM BEEKLEY MEDICAL

TomoSPOT® for Marking Moles

REF 782 QTY 54/box

- 1.0mm low-density see-through ring
- pinch-free material
- for use with digital breast tomosynthesis equipment



THE RAISED CIRCLE ONLY
FROM BEEKLEY MEDICAL

O-SPOT® Designed for Digital® Soft 'n Stretchy®

REF 791 QTY 55/box

- 1.0mm low-density see-through ring
- pinch-free material
- for use with full-field digital equipment



THE RAISED CIRCLE ONLY
FROM BEEKLEY MEDICAL

O-SPOT® Light Image® Soft 'n Stretchy®

REF 691 QTY 55/box

- 1.0mm see-through ring
- pinch-free material
- compatible with digital equipment



THE RAISED CIRCLE ONLY
FROM BEEKLEY MEDICAL

O-SPOT® Light Image®

REF 652 QTY 58/box

- 1.0mm see-through ring
- highlights without obscuring
- compatible with digital equipment

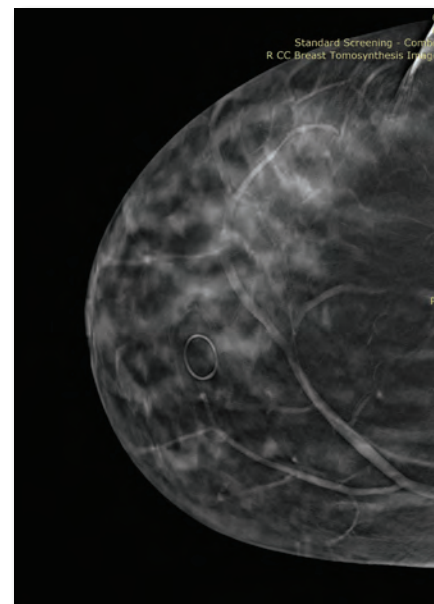


THE RAISED CIRCLE ONLY
FROM BEEKLEY MEDICAL

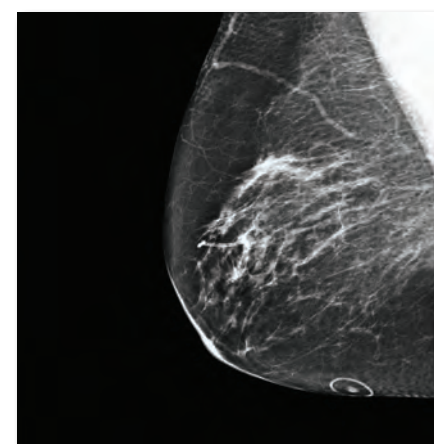
O-SPOT®

REF 609 QTY 58/box

- 1.6mm semi-radiolucent ring
- burnout-resistant bright image



Tomosynthesis mole marker image



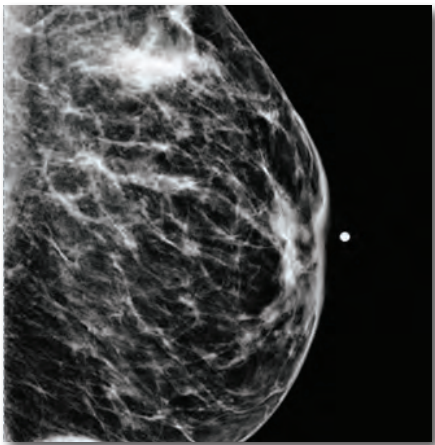
COLOR PINK AS SHOWN - Reg. U.S. Pat. & Tm. Off.

products on this page shown actual size

Visit beekley.com for Product Safety Information.

Nipple Markers

Immediately identify nipple location on clinical images in mammography. Nipple markers help expedite image critique and interpretation, detect movement, reduce retakes, improve positioning and serve as a valuable landmark in obtaining precise measurement to areas of concern.



1.5mm Lead-Free Pellets



N-SPOT®
REF 608 QTY 122/box
• adhesive side tabs



X-SPOT®
REF 601 QTY 150/box
• easy Pik-UP™ tab



X-SPOT®
REF 101 QTY 150/box
• easy Pik-UP™ tab

2.0mm Lead-Free Pellets



N-SPOT®
REF 653 QTY 110/box
• extended side tabs and adhesive-free center



N-SPOT®
REF 610 QTY 122/box
• adhesive side tabs



Y-SPOT®
REF 602 QTY 132/box
• easy Pik-UP™ tab



Y-SPOT®
REF 102 QTY 132/box
• easy Pik-UP™ tab

products on this page shown actual size



Mammography Skin Markers

2.3mm Non-Metallic Pellets



TomoSPOT® for Marking Nipples

REF 781 QTY 92/box

- pinch-free material with adhesive-free center
- for use with digital breast tomosynthesis equipment



N-SPOT® Designed for Digital® Soft 'n Stretchy® Plus

REF 790P QTY 94/box

- pinch-free material with larger adhesive-free center
- for use with full-field digital equipment



N-SPOT® Designed for Digital® Soft 'n Stretchy®

REF 790 QTY 94/box

- pinch-free material with adhesive-free center
- for use with full-field digital equipment



N-SPOT® Designed for Digital®

REF 732 QTY 110/box

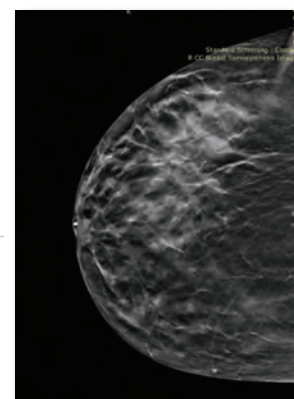
- extended side tabs; adhesive-free center
- for use with full-field digital equipment



V-SPOT® Designed for Digital®

REF 703 QTY 130/box

- easy Pik-UP™ tab
- for use with full-field digital equipment



Tomosynthesis nipple marker image

2.5mm Lead-Free Pellets



N-SPOT® Soft 'n Stretchy®

REF 690 QTY 94/box

- pinch-free material with adhesive-free center



N-SPOT®

REF 632 QTY 110/box

- extended side tabs; adhesive-free center



V-SPOT®

REF 603 QTY 130/box

- easy Pik-UP™ tab

Palpable Mass Markers

Readily identify symptomatic areas and provide permanent documentation that a palpable area was noted.



TomoSPOT® for Marking Palpable Masses

REF 784 QTY 116/box

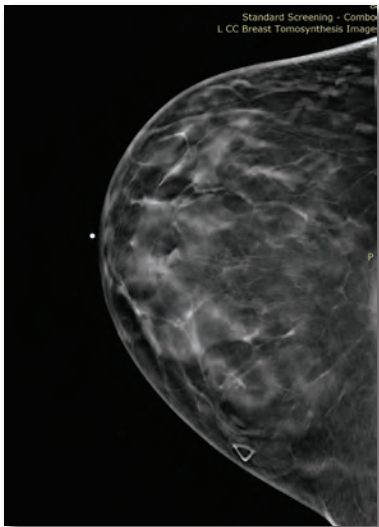
- 1.0mm low-density see-through triangle
- pinch-free material
- for use with digital breast tomosynthesis equipment



A-SPOT® Light Image®

REF 651 QTY 120/box

- 1.0mm see-through triangle
- highlights without obscuring
- compatible with digital equipment



Tomosynthesis palpable mass marker image

Point of Pain/Non-Palpable Area of Concern Markers

Clarifies the area marked by a square as different from any other topographic or palpable area of study during interpretation such as point of pain, cyst, bug bite, rash, bruise, or ecchymosis.



TomoSPOT® for Marking Non-Palpable Areas of Concern

REF 785 QTY 58/box

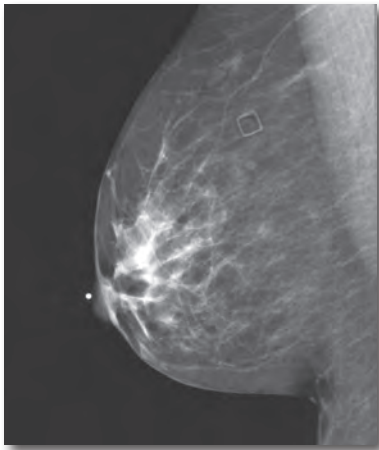
- 1.0mm low-density see-through square
- pinch-free material
- for use with digital breast tomosynthesis equipment



Altus® Light Image®

REF 654 QTY 60/box

- 1.0mm see-through square
- highlights without obscuring
- compatible with digital equipment



products on this page shown actual size

Mammography Skin Markers

Scar Markers

Correlate architectural distortion from previous biopsy sites by delineating exact location of incisions.

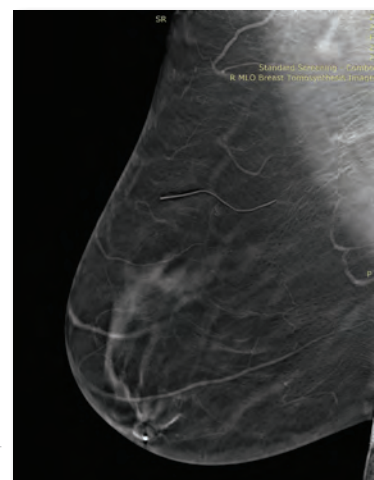


TomoSPOT® for Marking Scars

REF 783

QTY 273cm cut to measure roll/box

- 1.0mm diameter low-density see-through line
- pinch-free material
- for use with digital breast tomosynthesis equipment



Tomosynthesis scar marker image



S-SPOT® Designed for Digital® Soft 'n Stretchy®

REF 777

QTY 280cm cut to measure roll/box

- 1.0mm diameter low-density see-through line
- pinch-free material
- for use with full-field digital equipment



S-SPOT® Light Image® Soft 'n Stretchy®

REF 677

QTY 280cm cut to measure roll/box

- 1.0mm diameter see-through line
- pinch-free material
- compatible with digital equipment



S-SPOT® Light Image®

REF 650

QTY 327cm cut to measure roll/box

- 1.0mm diameter see-through line
- highlights without obscuring
- compatible with digital equipment



S-SPOT®

REF 607

QTY 363cm cut to measure roll/box

- .33mm diameter radiopaque line
- burnout-resistant, bright image

products on this page shown actual size

ColdSPOT® Cold Therapy Packs

Reduce bleeding, bruising, pain, and inflammation after minimally invasive breast biopsies.

ColdSPOT cold therapy packs provide targeted and effective cold therapy treatment for up to 3 times longer than ice or chemical packs. A patient-friendly low profile design and two self-adhesive side tabs allow ColdSPOT cold therapy packs to be worn discreetly and comfortably without shifting, ensuring targeted therapy to the afflicted area.



ColdSPOT®

REF 500 QTY 100/case

- 2.75" x 3" gel pack
- self-adhesive side tabs



ColdSPOT® with Floral Design

REF 502 QTY 68/case

- 2" x 3" advanced gel pack
- self-adhesive side tabs



ColdSPOT® Pillows

REF 505 QTY 50/box

- 2" x 3" advanced gel pack
- soft, flexible fabric covering
- self-adhesive side tabs



Breast Biopsy

CoreTainer® Stereotactic Core Biopsy Image and Transport System

Separate, image, and transport fragile core needle biopsy samples with limited handling of specimens.

CoreTainer® is a sealed, compartmentalized system that provides unsurpassed image quality of core biopsy specimens compared to other methods. CoreTainer® helps reduce handling of fragile cores so that tissue sample integrity remains intact for the pathologist's analysis. Divided compartments and radiolucent indicators quickly allow correlation of core location to the image.



CoreTainer® with Clock-Face Divider for Manual Core Collection

REF 301 QTY 12/box

- 3.5" diameter
- five separate compartments
- for manually collected stereotactic core needle biopsy specimens



CoreTainer® with A/B Divider for Basket Collection

REF 303 QTY 12/box

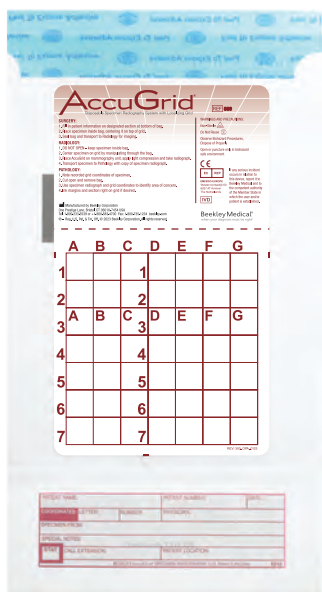
- 3.5" diameter
- two separate compartments
- for basket collected stereotactic core needle biopsy system



AccuGrid® Specimen Localizing Grid System

Safely image, transport, and process surgical breast specimens without losing specimen orientation or risking exposure to bloodborne pathogens.

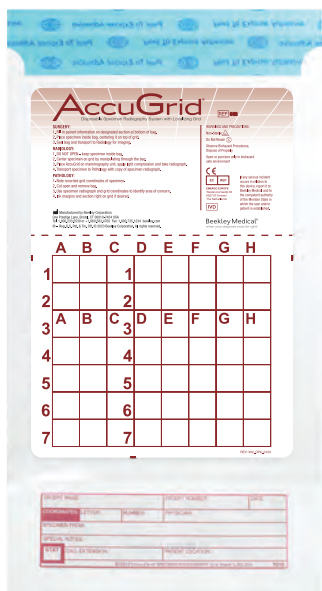
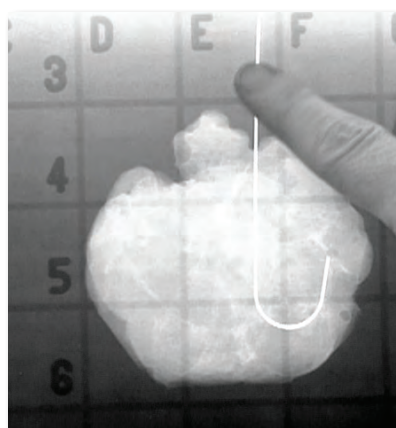
AccuGrid® is a sealed localizing grid system for imaging, transporting, and processing surgical breast specimens. A special coating on the grid prevents specimen movement during transport to pathology. Two sets of radiolucent coordinates provide accurate localization without obscuring tissue detail.



AccuGrid®

REF 300 QTY 12/box

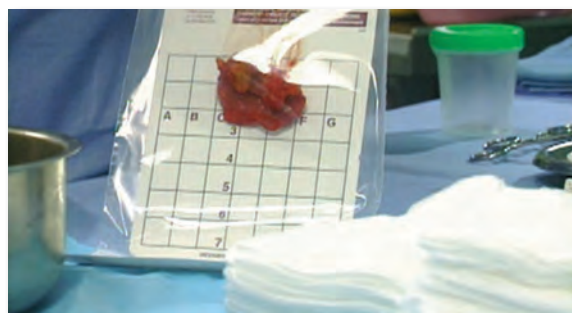
- 4.65" radiolucent grid inside a sealable surgical bag



AccuGrid®

REF 302 QTY 10/box

- 5.65" radiolucent grid inside a sealable surgical bag
- expanded grid size for use with larger specimens



Lumpectomy

Cradles® Needle Localization Wire Protectors

Help prevent wire migration or movement during transport to surgery for more accurate excisional biopsies.

Cradles® needle localization wire protectors are professional clear covers that protect and stabilize the needle localization wire. Unlike bulky padding, Cradles® conform to the patient's body to prevent wire movement during transport for greater patient comfort and more accurate excisional biopsies. The localization wire is visible at all times, making removal of Cradles® in preparation for surgery safe and easy, with no guesswork or potential tugging of the wire.

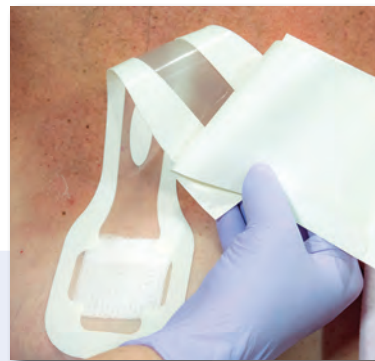


Cradles®

REF 309 QTY 12/box

- 12" x 3" translucent cover with foam adhesive border
- disposable, clear covers for protecting and stabilizing the needle localization wire

- Wire is visible at all times
- Adheres and contours to skin
- Secure stabilization of guidewire
- Easy to apply and remove
- Saves time over makeshift methods



Pinnacle® Needle-Loc Needle Protectors

When a physician requires the *needle* or *cannula* to remain in place after a localization procedure, Pinnacle® needle-loc needle protectors offer a professional alternative to coffee cups and tape.

Sturdy construction and “just right” adhesive tabs help guard needle against accidental bumps and dislodgement. Peek through window allows visibility of needle; intuitive design makes Pinnacle® easy to apply and remove.



Pinnacle®

REF 330 QTY 12/box

- 4 self-adhesive tabs
- peek-through window
- for protecting and stabilizing the needle localization needle/cannula

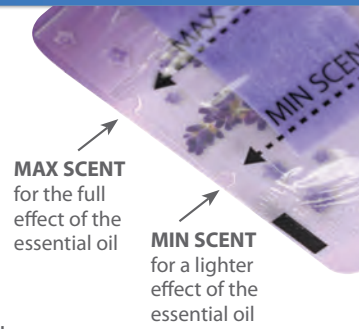


Elequil Aromatabs® Aromatherapy

Elequil Aromatabs® Aromatherapy Designed for the Clinical Setting

Promote relaxation, comfort, sleep, and soothe queasiness with Elequil Aromatabs aromatherapy, a multi-modality, non-pharmacological approach to patient care.

100% pure essential oils in a unique controlled delivery system that allows for hands-free aromatherapy that adheres to gown or clothing offering a personal aromatherapy experience to each patient. Elequil Aromatabs® aromatherapy is a simple nursing intervention used in all areas of the hospital, long-term care facilities, dental practices, or any other healthcare setting to enhance the patient experience. Also used to help comfort staff, family members, and caregivers.



Elequil Aromatabs® Aromatherapy Lavender-Peppermint

REF 373 QTY 50/box

Lavender-Peppermint
Lavandula angustifolia-Mentha piperita

- lasts up to 8 hours
- promotes relaxation during pain, helps comfort and calm anxiousness, and soothes queasiness



Elequil Aromatabs® Aromatherapy Lavender-Sandalwood

REF 370 QTY 50/box

Lavender-Sandalwood
Lavandula angustifolia-Santalum album

- lasts up to 24 hours
- promotes relaxation during pain, helps comfort, and calms anxiousness



Elequil Aromatabs® Aromatherapy Lavender

REF 372 QTY 50/box

Lavender
Lavandula angustifolia

- lasts up to 8 hours
- promotes relaxation during pain, helps comfort, and calms anxiousness



Elequil Aromatabs® Aromatherapy Orange-Peppermint

REF 371 QTY 50/box

Orange-Peppermint
Citrus sinensis-Mentha piperita

- lasts up to 8 hours
- uplifts and can soothe queasiness

Clinical studies using Elequil Aromatabs aromatherapy available upon request.

GuideLines® CT Grids for Localizing Needle Entry Sites

Optimize localization of needle entry sites, increase first-stick accuracy under CT-guided biopsies with GuideLines® biopsy grids.

GuideLines®

Contours to anatomy without buckling. Precise, uniform spacing between non-metallic lines (with extra spacing between lines 1 & 2 for right to left orientation) and distinct imaging help reduce misregistration and repeat needle adjustments.

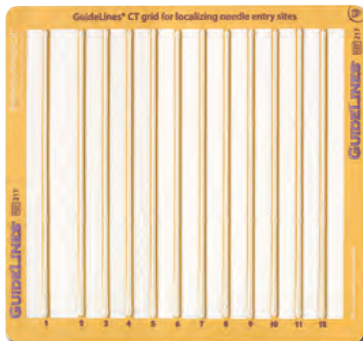
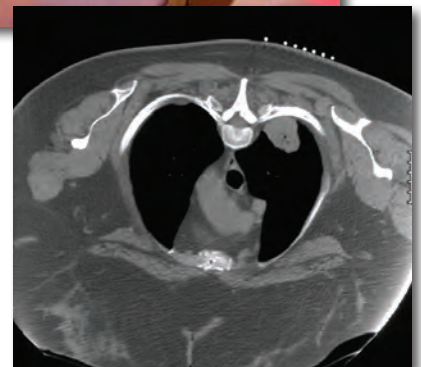
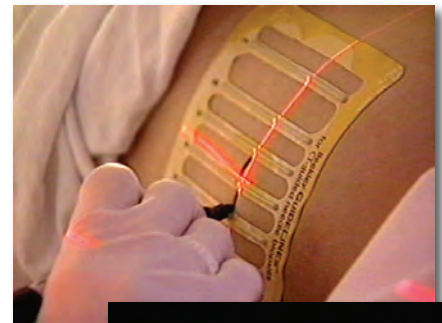


THE GRID WITH RAISED LINES,
ONLY FROM BEEKLEY MEDICAL

GuideLines®

REF 117 QTY 20/box

- 4" x 5" biopsy grid
- 7 non-metallic radiopaque lines
- open pane design for easy mark placement
- ideal as a general use grid for single entry sites, known location of entry sites, and most areas of pathology

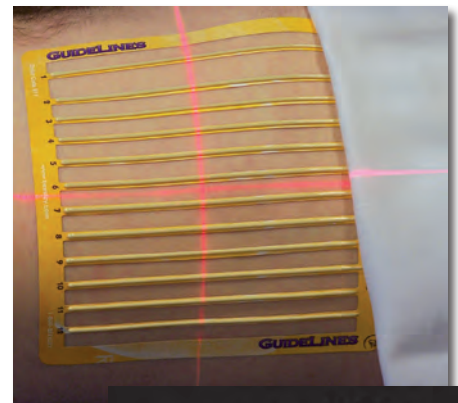


THE GRID WITH RAISED LINES,
ONLY FROM BEEKLEY MEDICAL

GuideLines®

REF 217 QTY 15/box

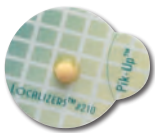
- 7" x 7.5" biopsy grid
- 12 non-metallic radiopaque lines
- open pane design for easy mark placement
- ideal for use with larger patients, when planning multiple entry sites, unclear location of the lesion, celiac plexus blocks, and cryoablation



Localizers™ Localization Markers

Precisely identify areas of interest in diagnostic CT and reduce potential rescans caused by skin marker artifact.

Specifically calibrated for diagnostic CT, Localizers™ provide a bright image with minimal artifact for precisely identifying an area of interest.



Localizers™

REF 210 QTY 40/box

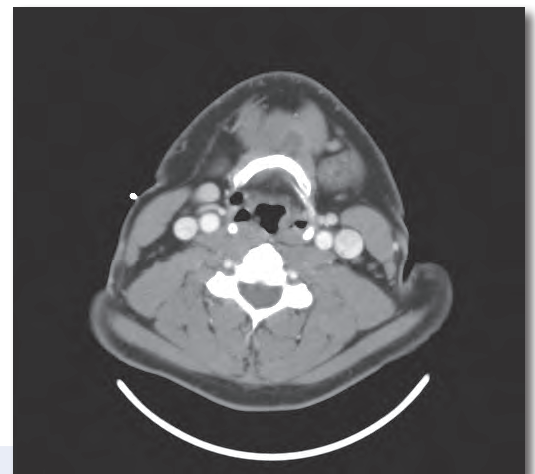
- 2.3mm low-density pellet
- ideal for identifying soft tissue masses on the neck



Localizers™

REF 211 QTY 40/box

- 4.0mm low-density pellet
- ideal for identifying areas of interest on abdominal cases or with larger patients



Localizers™ Localization Markers

- Clean image
- Low density composition
- Low artifact
- Clear communication and localization

products on this page shown actual size

Visit beekley.com for Product Safety Information.

Multi-Modality Fiducial

PinPoint® for Image Registration

Achieve greater accuracy in image registration with PinPoint® for image registration's easy application and unique conical design.



PinPoint®

REF 128 QTY 30/box

- ideal for image registration performed under CT and MRI
- conical design with a 1.27mm diameter center hole

As a multi-modality fiducial marker, PinPoint® provides:

Unmistakable Imaging

Bright and consistent imaging in both CT and MRI scans - PinPoint® for image registration is easily identified on scans.

Improved Accuracy

PinPoint® for image registration's conical design directs probes to 1.27mm diameter center hole.

Time Savings

Easy application and removal – PinPoint® for image registration's Pik-UP™ tab helps eliminate frustration and wasted time.



product on this page shown actual size

Ortho-SPOT Packets™ Skin Markers for MRI

Ortho-SPOT Packets skin markers for MRI are sized just right for precise, indentation-free localization in orthopedic, breast, and pediatric MRI imaging.

Sized to image only on slices specific to the area of interest, Ortho-SPOT Packets provide interpreting physicians a precise landmark that images brightly on all pulse sequences without distorting pathology.



PACKET MARKERS ONLY
FROM BEEKLEY MEDICAL

Ortho-SPOT Packets™

REF 186 QTY 40/box

- .75cm Radiance® filled packet
- ideal for orthopedic, pediatric, or breast imaging
- designed for optimum patient comfort



PinPoint® for Small Field of View Imaging

Communicate a patient's point of pain or specifically identifiable area of interest on every image sequence with PinPoint® for small field of view imaging. PinPoint® identifies with precision and without any distortion to pathology.

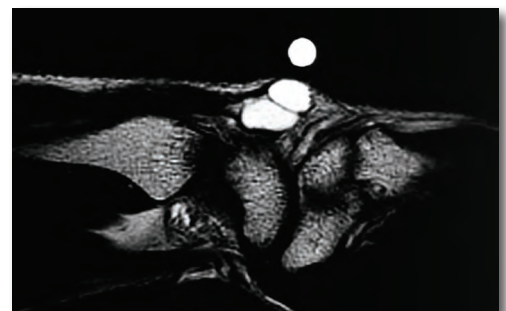
When the patient says "It hurts right here," use PinPoint® for small field of view imaging.



PinPoint®

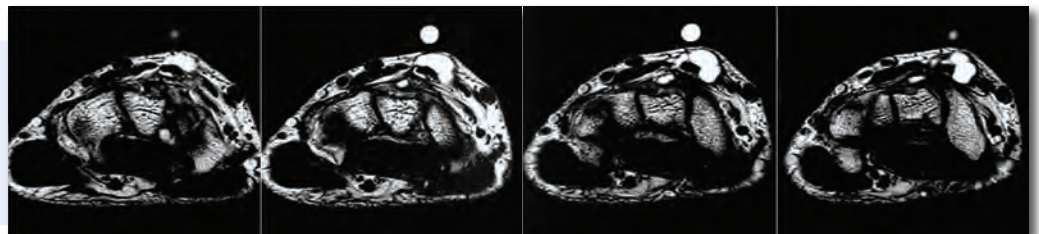
REF 187 QTY 40/box

- 6mm Radiance® filled inner diameter
- ideal for small field of view imaging in MRI
- precisely identifies an exact area of interest in MRI



PinPoint®

Images on just 2 to 3 slices for accurate localization.



products on this page shown actual size

MR-SPOT® Skin Markers for MRI

Clearly identify areas of interest in MRI with a bright and consistent image on all MRI sequences.

MR-SPOT® MRI skin markers are available in two styles and four sizes to accommodate a variety of needs. MR-SPOT® tubes provide a sharp distinct image. MR-SPOT Packets™ provide optimum patient comfort and help reduce marker indentation.



MR-SPOT®

REF 122 QTY 40/box

- 1.5cm Radiance® filled tube
- ideal for extremities, soft tissue masses, and breast MRI



MR-SPOT®

REF 121 QTY 40/box

- 3.0cm Radiance® filled tube
- ideal for thoracic spines and larger areas of interest



MR-SPOT Packets™

REF 185 QTY 40/box

- 1.75cm Radiance® filled packet
- ideal for extremities, soft tissue masses, and breast MRI
- designed for optimum patient comfort

PACKET MARKERS ONLY
FROM BEEKLEY MEDICAL

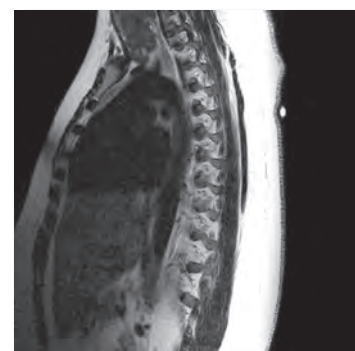
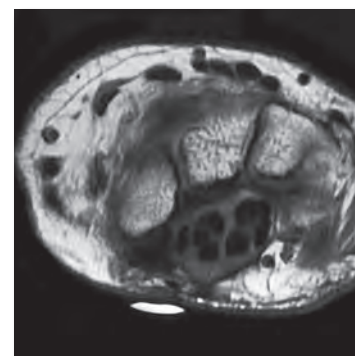


MR-SPOT Packets™

REF 184 QTY 40/box

- 5.0cm Radiance® filled packet
- ideal for thoracic spines and larger areas of interest
- designed for optimum patient comfort

PACKET MARKERS ONLY
FROM BEEKLEY MEDICAL



CT Simulation

CT Simulation Skin Markers

Save time and increase accuracy during CT treatment planning with non-metallic lines, pellets, and crosshair skin markers.

RT-SPOT® Elevated Skin Marker for CT Simulation

The only skin marker for CT simulation that is elevated from the skin line and helps to exclude the marker from the automatic body contour.

Manual contouring can be imperfect, leading to dose inaccuracies or rework of treatment plans. RT-SPOT elevated skin marker for CT simulation is designed to minimize dose perturbation and reduce the need for manual contouring.

- Minimizes dose perturbation and helps ensure dose accuracy
- Saves time by reducing the need for manual contouring and density override
- Flexible and easier to form into desired shapes
- Stays in place on the skin and does not lift
- Lower density, non-metallic line, minimizes artifact

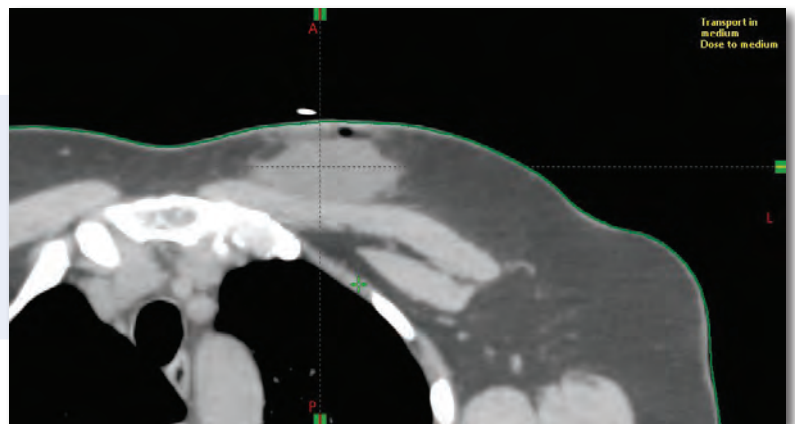


RT-SPOT®

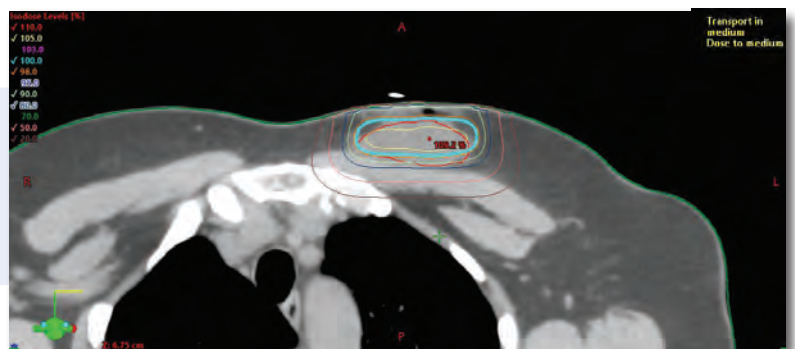
REF 127 **QTY** 140cm cut to measure roll/box

- 2.0mm diameter, elevated, non-metallic line
- for marking field borders, tangents, and scars

Axial CT Scan of female breast radiation patient with surgical scar identified by RT-SPOT elevated skin marker for CT simulation, which is excluded from the body contour.



Corresponding image of electron dose distribution unperturbed by RT-SPOT elevated skin marker for CT simulation.



product on this page shown actual size

CT-SPOT® Skin Markers for CT Simulation

Ideal for marking a variety of specific points of reference and other areas of concern. Image brightly under CT-simulation without streaking or artifact.

**CT-SPOT®**

REF 119 **QTY** 85/box

- 2.3mm non-metallic pellet
- for 3-point set-ups and isocenters

**CT-SPOT®**

REF 120 **QTY** 85/box

- 4.0mm non-metallic pellet
- for 3-point set-ups and isocenters

**CT-SPOT®**

REF 123 **QTY** 50/box

- 2.0cm x 2.0cm non-metallic crosshair
- for 3-point set-ups, isocenters, and field borders

**CT-SPOT®**

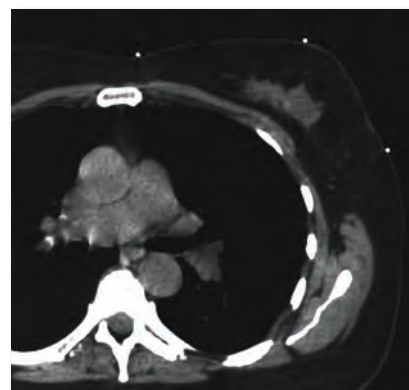
REF 118
QTY 320cm cut to measure roll/box

- 2.0mm diameter non-metallic line
- for marking scars and field borders

**S-SPOT®**

REF 607
QTY 363cm cut to measure roll/box

- .33mm diameter metallic line
- burnout-resistant brighter image
- for marking scars and field borders



Conventional Simulation

Conventional Simulation Skin Markers

Identify and differentiate specific points of reference in conventional simulation treatment planning and on port films with metallic pellets, lines, and arrow skin markers. Convenient and easy to use, metallic SPOT® skin markers for radiation therapy are ideal for marking 3 point set-ups, isocenters, field borders, and match lines on treatment sites.



X-SPOT®

REF 101 QTY 150/box

- 1.5mm lead-free metallic pellet
- easy Pik-UP™ tab



Y-SPOT®

REF 102 QTY 132/box

- 2.0mm lead-free metallic pellet
- easy Pik-UP™ tab



V-SPOT®

REF 603 QTY 130/box

- 2.5mm lead-free metallic pellet
- easy Pik-UP™ tab



D-SPOT®

REF 104 QTY 99/box

- lead-free metallic arrow with easy Pik-UP™ tab
- for marking nodes and outer canthus



Z-SPOT®

REF 114 QTY 40/box

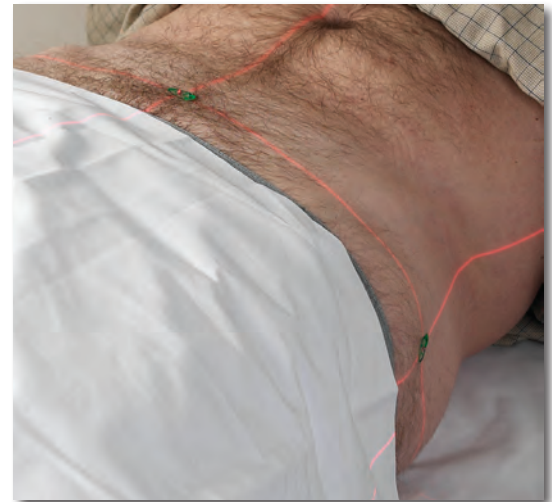
- 4.3mm lead-free metallic pellet with easy Pik-UP™ tab
- for marking port films



T-SPOT®

REF 111
QTY 275cm cut to measure roll/box

- .8mm diameter metallic line
- for marking scars, nodes, field borders, match lines, and breast tangents



products on this page shown actual size

PointGuards® Temporary Mark Covers

Ensure accurate day to day reproducibility of set-ups during treatment with PointGuards® temporary mark covers.

Precut clear adhesive covers provide a watertight seal and stay securely in place for up to 4 weeks. Proven to be less irritating to skin than other methods, PointGuards® are quick and easy to use.

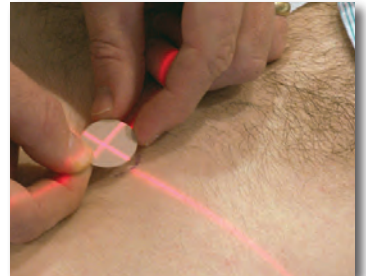


THE CLEAR CIRCLE ONLY
FROM BEEKLEY MEDICAL

PointGuards®

REF 115 QTY 100/box

- 2.5cm circular adhesive covers
- for smaller treatment planning marks

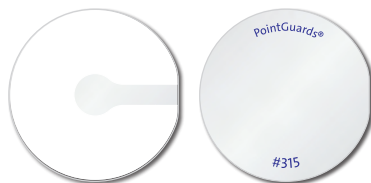


THE CLEAR OVAL ONLY
FROM BEEKLEY MEDICAL

PointGuards®

REF 215 QTY 75/box

- 1.5cm x 5.0cm linear adhesive covers
- for longer, more linear treatment planning marks

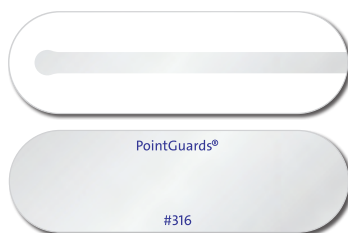


THE CLEAR CIRCLE ONLY
FROM BEEKLEY MEDICAL

PointGuards®

REF 315 QTY 100/box

- 2.5cm circular adhesive covers
- for smaller treatment planning marks
- see-through liner for quicker and more precise placement



THE CLEAR OVAL ONLY
FROM BEEKLEY MEDICAL

PointGuards®

REF 316 QTY 75/box

- 1.5cm x 5.0cm linear adhesive covers
- for longer, more linear treatment planning marks
- see-through liner for quicker and more precise placement

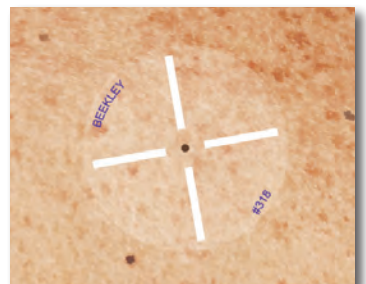


THE OPEN CROSSHAIR ONLY
FROM BEEKLEY MEDICAL

PointGuards®

REF 318 QTY 85/box

- 2.5cm circular adhesive covers
- crosshair design
- for hard to find marks



TenderTouch™

TenderTouch™ Cushioned Tape for Thermoplastic Masks

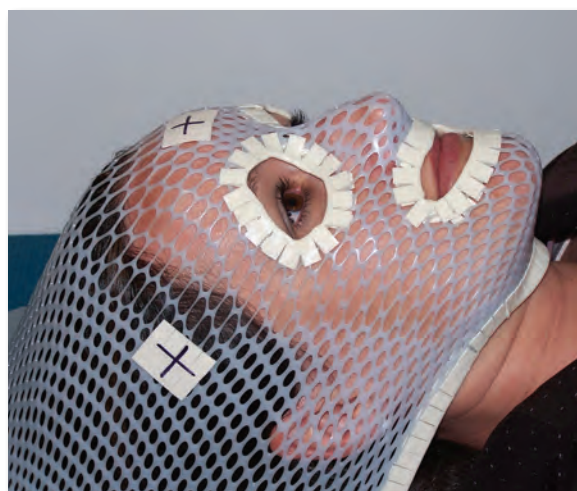
Protect patients from the rough edges of thermoplastic masks and provide maximum patient comfort during head and neck radiation therapy treatments.

Flexible, scored, soft-cushioned tape easily molds around cut edges of masks. Tape sticks consistently to the thermoplastic material throughout treatment. Durable fade-resistant so that orientation marks remain visible.

Dosimetric Properties of TenderTouch™ Cushioned Tape

The effects on surface dose of TenderTouch foam adhesive material is minimal and could be ignored in most clinical situations. In particular, the incremental change in surface dose for this material relative to the effect of the thermoplastic is not considered clinically significant in most foreseeable situations.

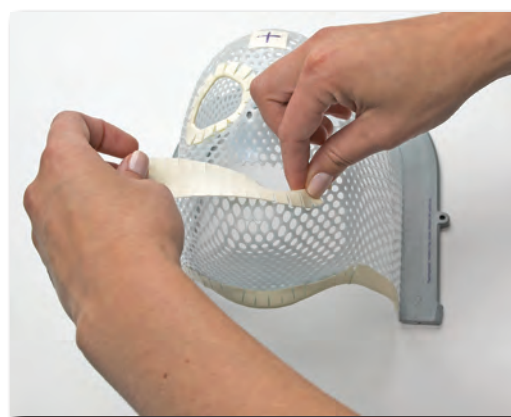
A copy of the full Dosimetrist Report is available upon request.



TenderTouch™

REF 418 **QTY 200cm cut to measure roll/box**

- 2.5cm wide cushioned tape
- scored for easy application to cut edges of thermoplastic masks
- durable marking surface - fade resistant so orientation marks stay visible throughout treatment
- ideal for masks that are cut due to of claustrophobia, tightness, bite blocks, electron field, bolus and more



Disposable R & L X-Ray Markers

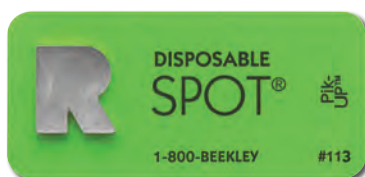
Ensure anatomical orientation on all images is permanently identified as "Right" or "Left." Single-use, disposable. The sanitary alternative to permanent markers.



L-SPOT®

REF 112 QTY 64/box

- lead-free metallic L for documenting left side
- for isolation, trauma; neonatal and burn units



R-SPOT®

REF 113 QTY 64/box

- lead-free metallic R for documenting right side
- for isolation, trauma; neonatal and burn units



Chest, Trauma, and General Imaging

Skin Markers for General Imaging

Communicate points of interest such as nipple locations, entry and exit sites, or areas of pain in general diagnostic and emergency room imaging with Beekley® SPOT® radiopaque pellets and arrows.



X-SPOT®

REF 101 QTY 150/box

- 1.5mm lead-free metallic pellet
- easy Pik-UP™ tab



Y-SPOT®

REF 102 QTY 132/box

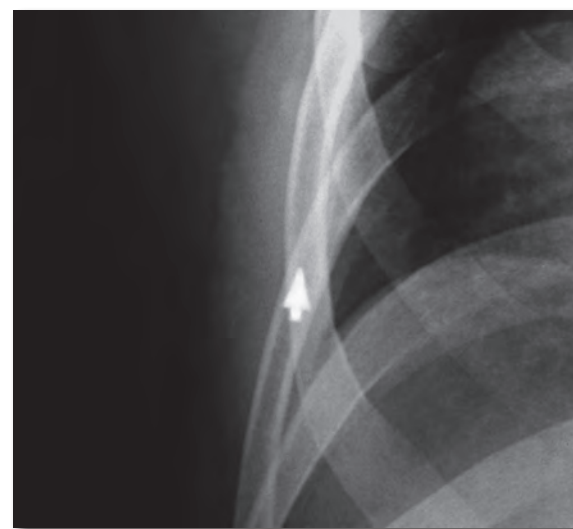
- 2.0mm lead-free metallic pellet
- easy Pik-UP™ tab



D-SPOT® arrow

REF 104 QTY 99/box

- lead-free metallic arrow
- easy Pik-UP™ tab



products on this page shown actual size

Linear Product Scissors

Complimentary scissors available upon request for all “cut to measure” linear products.



REF 999 QTY 1

Wall Mounts for SPOT® Dispensers

Complimentary wall mounts available upon request.
One wall mount will hold up to four plastic dispensers.



REF 890 QTY 1

Product not included.



Check with your local distributor for availability of products in your country.



Manufactured by Beekley Corporation
One Prestige Lane, Bristol, CT 06010-7454 USA
Tel: 1.800.233.5539 or +1.860.583.4700 Fax: 1.800.735.1234 beekley.com
Made in the USA

A-SPOT, ACCUGRID, ALTUS, AROMATABS, BEEKLEY, BEEKLEY MEDICAL, BEEKLEY SKIN MARKING SYSTEM, BELLA BLANKETS, COLDSPOT, CORETAINER, CRADLES, CT-SPOT, DESIGNED FOR DIGITAL, ELEQUIL, ELEQUIL AROMATABS, FLORALS, GUIDELINES, HUMMINGBIRD (DESIGN), LIGHT IMAGE, L-SPOT, MR-SPOT, MR-SPOT PRODUCT CONFIGURATION, N-SPOT, O-SPOT, ORTHO-SPOT, PINNACLE, PINPOINT, POINTGUARDS, RADIANCE, R-SPOT, RT-SPOT, S-SPOT, SOFT 'N STRETCHY, SPOT, TOMOSPOT, V-SPOT, WHEN YOUR DIAGNOSIS MUST BE RIGHT, X-SPOT, X-SPOT AND DESIGN, Y-SPOT, THE COLOR PINK, THE GRID WITH RAISED LINES, THE PACKET PRODUCT CONFIGURATION, THE RAISED CIRCLE, THE RAISED TRIANGLE, and THE RAISED SQUARE are Reg. U.S. Pat. & Tm. Off. BEEKLEY, AROMATABS, and LIGHT IMAGE are registered trademarks in Canada. BEEKLEY, ACCUGRID, AROMATABS, CORETAINER, LIGHT IMAGE, SPOT, and TOMOSPOT are registered Community Trademarks. LOCALIZERS, ORTHO-SPOT PACKETS, MR-SPOT PACKETS, PIK-UP, TENDERTOUCHE, and VERTICAL CHANNEL TECHNOLOGY are unregistered trademarks of Beekley Corporation.

© 2023 Beekley Corporation. All rights reserved.

If any serious incident occurs in relation to this device, report it to Beekley Medical and to the competent authority of the Member State in which the user and/or patient is established.



EMERGO EUROPE
Westervoortsedijk 60
6827 AT Arnhem
The Netherlands

Connect with us:



REV: BM_CT_EN-INT_0623